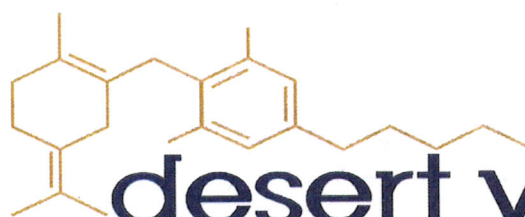


Desert Valley Testing
 51 W. Weldon Ave
 Phoenix, Arizona 85013
 Phone#: 480-788-6644
 www.desertvalleytesting.com



desert valley TESTING

Quality Assurance Report

Analysis Date: 06/15/19
 Chemist: JG

Residual Solvents Quality Control Report GCMS Analysis

LRB			Opening CCV				Closing CCV			
Analyte List	Recovery (ppm)	Reporting Limit	Analyte List	Recovery (ppm)	True Value (ppm)	Recovery %	Analyte List	Recovery (ppm)	True Value (ppm)	Recovery %
Propane	<5.0	5.0 ppm	Propane	NA	100.00	NA	Propane	NA	100.00	NA
Isobutane	<5.0	5.0 ppm	Isobutane	44.26	100.00	44	Isobutane	NA	100.00	NA
n-Butane	<5.0	5.0 ppm	n-Butane	53.48	100.00	53	n-Butane	NA	100.00	NA
Ethanol	<5.0	5.0 ppm	Ethanol	77.10	100.00	77	Ethanol	NA	100.00	NA
Isopentane	<5.0	5.0 ppm	Isopentane	NA	100.00	NA	Isopentane	NA	100.00	NA
Acetonitrile	<5.0	5.0 ppm	Acetonitrile	88.12	100.00	88	Acetonitrile	NA	100.00	NA
Acetone	<50.0	50.0 ppm	Acetone	89.43	100.00	89	Acetone	NA	100.00	NA
2-Propanol	<5.0	5.0 ppm	2-Propanol	84.38	100.00	84	2-Propanol	NA	100.00	NA
n-Pentane	<5.0	5.0 ppm	n-Pentane	92.08	100.00	92	n-Pentane	NA	100.00	NA
n-Hexane	<5.0	5.0 ppm	n-Hexane	80.91	100.00	81	n-Hexane	NA	100.00	NA
Chloroform	<5.0	5.0 ppm	Chloroform	99.71	100.00	100	Chloroform	NA	100.00	NA
Tetrahydrofuran	<5.0	5.0 ppm	Tetrahydrofuran	84.76	100.00	85	Tetrahydrofuran	NA	100.00	NA
Benzene	<5.0	5.0 ppm	Benzene	75.64	100.00	76	Benzene	NA	100.00	NA
Carbon Tetrachloride	<5.0	5.0 ppm	Carbon Tetrachloride	98.85	100.00	99	Carbon Tetrachloride	NA	100.00	NA
n-Heptane	<5.0	5.0 ppm	n-Heptane	101.02	100.00	101	n-Heptane	NA	100.00	NA
Toluene	<5.0	5.0 ppm	Toluene	81.24	100.00	81	Toluene	NA	100.00	NA
Xylenes	<10.0	10.0 ppm	Xylenes	222.16	200.00	111	Xylenes	NA	200.00	NA

Potency Quality Control Report HPLC Analysis

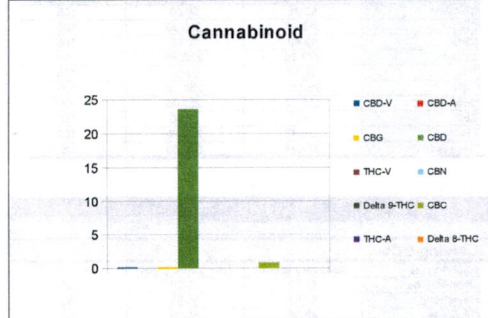
LRB			Opening CCV				Closing CCV			
Analyte List	Recovery (ppm)	Reporting Limit	Analyte List	Recovery (ppm)	True Value (ppm)	Recovery %	Analyte List	Recovery (ppm)	True Value (ppm)	Recovery %
CBD-V	<2.0	2.0 ppm	CBD-V	10.17	10.00	102	CBD-V	52.88	50.00	106
CBD-A	<10.0	10.0 ppm	CBD-A	50.89	50.00	102	CBD-A	258.27	250.00	103
CBG	<2.0	2.0 ppm	CBG	10.01	10.00	100	CBG	52.83	50.00	106
CBD	<10.0	10.0 ppm	CBD	53.47	50.00	107	CBD	272.86	250.00	109
THC-V	<2.0	2.0 ppm	THC-V	11.60	10.00	116	THC-V	56.87	50.00	120
CBN	<10.0	10.0 ppm	CBN	51.22	50.00	102	CBN	262.12	250.00	105
Delta 9-THC	<10.0	10.0 ppm	Delta 9-THC	51.62	50.00	103	Delta 9-THC	265.95	250.00	106
CBC	<2.0	2.0 ppm	CBC	10.95	10.00	110	CBC	54.07	50.00	108
THC-A	<10.0	10.0 ppm	THC-A	50.97	50.00	102	THC-A	256.67	250.00	103
Delta 8-THC	<100.0	100.0 ppm	Delta 8-THC	174.80	200.00	87	Delta 8-THC	477.28	500.00	95

Terpene Quality Control Report GCMS Analysis

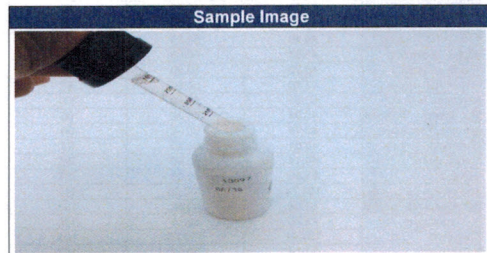
LRB			Opening CCV				Closing CCV			
Analyte List	Recovery (ppm)	Reporting Limit	Analyte List	Recovery (ppm)	True Value (ppm)	Recovery %	Analyte List	Recovery (ppm)	True Value (ppm)	Recovery %
alpha-Pinene	<1.0	1.0 ppm	alpha-Pinene	40.24	50.00	80	alpha-Pinene	42.79	50.00	86
Camphene	<1.0	1.0 ppm	Camphene	38.89	50.00	78	Camphene	42.86	50.00	86
Sabinene	<1.0	1.0 ppm	Sabinene	37.38	50.00	75	Sabinene	42.55	50.00	85
beta-Myrcene	<1.0	1.0 ppm	beta-Myrcene	38.35	50.00	77	beta-Myrcene	47.30	50.00	95
Beta-Pinene	<1.0	1.0 ppm	Beta-Pinene	41.12	50.00	82	Beta-Pinene	44.96	50.00	90
p-mentha-1-5-diene	<1.0	1.0 ppm	p-mentha-1-5-diene	41.78	50.00	84	p-mentha-1-5-diene	47.39	50.00	95
(1S)-(+)-3-Carene	<1.0	1.0 ppm	(1S)-(+)-3-Carene	42.75	50.00	86	(1S)-(+)-3-Carene	45.40	50.00	91
Alpha-Terpinene	<1.0	1.0 ppm	Alpha-Terpinene	41.68	50.00	83	Alpha-Terpinene	45.84	50.00	92
Ocimene Isomer 1	<1.0	1.0 ppm	Ocimene Isomer 1	42.60	50.00	85	Ocimene Isomer 1	48.20	50.00	96
(R)-(+)-Limonene	<1.0	1.0 ppm	(R)-(+)-Limonene	39.66	50.00	79	(R)-(+)-Limonene	43.40	50.00	87
Ocimene Isomer 2	<1.0	1.0 ppm	Ocimene Isomer 2	44.95	50.00	90	Ocimene Isomer 2	50.51	50.00	101
Eucalyptol (1,8-Cineol)	<1.0	1.0 ppm	Eucalyptol (1,8-Cineol)	40.87	50.00	82	Eucalyptol (1,8-Cineol)	44.98	50.00	90
gamma-Terpinene	<1.0	1.0 ppm	gamma-Terpinene	41.18	50.00	82	gamma-Terpinene	45.15	50.00	90
Sabinene Hydrate	<1.0	1.0 ppm	Sabinene Hydrate	43.55	50.00	87	Sabinene Hydrate	46.61	50.00	93
Terpinolene	<1.0	1.0 ppm	Terpinolene	41.70	50.00	83	Terpinolene	44.14	50.00	88
Linalool	<1.0	1.0 ppm	Linalool	57.74	50.00	115	Linalool	63.40	50.00	127
(+)-Fenchone and L(-)-Fenchone	<1.0	1.0 ppm	(+)-Fenchone and L(-)-Fenchone	92.17	100.00	92	(+)-Fenchone and L(-)-Fenchone	101.74	100.00	102
(1R)-Endo-(+)-Fenchyl	<1.0	1.0 ppm	(1R)-Endo-(+)-Fenchyl	47.07	50.00	94	(1R)-Endo-(+)-Fenchyl	52.84	50.00	106
(-)-Isopulegol	<1.0	1.0 ppm	(-)-Isopulegol	45.76	50.00	92	(-)-Isopulegol	49.76	50.00	100
Camphor	<1.0	1.0 ppm	Camphor	94.22	100.00	94	Camphor	100.91	100.00	101
Isoborneol	<1.0	1.0 ppm	Isoborneol	49.92	50.00	100	Isoborneol	54.14	50.00	108
Hexahydrothymol	<1.0	1.0 ppm	Hexahydrothymol	47.81	50.00	96	Hexahydrothymol	49.56	50.00	99
(+)-Borneol and (-)-Borneol	<1.0	1.0 ppm	(+)-Borneol and (-)-Borneol	48.37	50.00	97	(+)-Borneol and (-)-Borneol	51.79	50.00	104
alpha-Terpineol	<1.0	1.0 ppm	alpha-Terpineol	51.96	50.00	104	alpha-Terpineol	52.58	50.00	105
gamma-Terpineol	<1.0	1.0 ppm	gamma-Terpineol	50.60	50.00	101	gamma-Terpineol	53.15	50.00	106
Nerol	<1.0	1.0 ppm	Nerol	52.43	50.00	105	Nerol	55.34	50.00	111
Geraniol	<1.0	1.0 ppm	Geraniol	49.56	50.00	99	Geraniol	47.81	50.00	96
(+)-Pulegone	<1.0	1.0 ppm	(+)-Pulegone	47.01	50.00	94	(+)-Pulegone	53.61	50.00	107
Geranyl Acetate	<1.0	1.0 ppm	Geranyl Acetate	36.18	50.00	72	Geranyl Acetate	46.38	50.00	93
alpha-Cedrene	<1.0	1.0 ppm	alpha-Cedrene	44.66	50.00	89	alpha-Cedrene	49.35	50.00	99
trans-Caryophyllene	<1.0	1.0 ppm	trans-Caryophyllene	43.91	50.00	88	trans-Caryophyllene	48.68	50.00	97
alpha-Humulene	<1.0	1.0 ppm	alpha-Humulene	46.37	50.00	93	alpha-Humulene	49.84	50.00	100
Valencene	<1.0	1.0 ppm	Valencene	46.70	50.00	93	Valencene	51.34	50.00	103
cis-Nerolidol	<1.0	1.0 ppm	cis-Nerolidol	48.65	50.00	97	cis-Nerolidol	54.41	50.00	109
trans-Nerolidol	<1.0	1.0 ppm	trans-Nerolidol	48.30	50.00	97	trans-Nerolidol	51.49	50.00	103
Guaiol	<1.0	1.0 ppm	Guaiol	46.80	50.00	94	Guaiol	49.79	50.00	100
(-)-Caryophyllene Oxide	<1.0	1.0 ppm	(-)-Caryophyllene Oxide	49.79	50.00	100	(-)-Caryophyllene Oxide	53.21	50.00	106
(+)-Cedrol	<1.0	1.0 ppm	(+)-Cedrol	50.46	50.00	101	(+)-Cedrol	52.37	50.00	105
(-)-alpha-Bisabolol	<1.0	1.0 ppm	(-)-alpha-Bisabolol	53.23	50.00	106	(-)-alpha-Bisabolol	55.93	50.00	112

Sample Information		
Sample Identification	MCT Oil CNO-600	
Laboratory Number	2019013097	
Batch Number	CNO-600	
Matrix	Oil	
Analyzed Date	06/15/19	
Extraction Date	06/15/19	
Cannabinoid (HPLC)	mg/mL	mg/Bottle
Compound		
CBD-V	0.12	NA
CBD-A	ND	NA
CBG	0.2	NA
CBD	23.62	NA
THC-V	ND	NA
CBN	ND	NA
Delta 9-THC	ND	NA
CBC	0.79	NA
THC-A	ND	NA
Delta 8-THC	ND	NA
Cannabinoids Total		
Max Active THC	ND	NA
Max Active CBD	23.62	NA
T. Active Cannabinoids	24.72	NA
Total Cannabinoids	24.72	NA

Max Active Ratios		
NA:1 CBD to THC		
ND:1 THC to CBD		



Sample Image



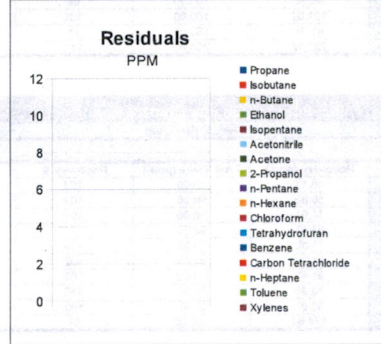
Micro Visual: NT

Percent Moisture: NT

Chemist: JG
 Report Expires: 09/13/19

RL=Reporting Limit
 NA=Not Applicable
 NT=Not Tested
 ND=Non Detected
 TNTC=Too Numerous to Count

RS (GCMS-HS)	PPM	RL
Compound		
Propane	NT	5.0
Isobutane	NT	5.0
n-Butane	NT	5.0
Ethanol	NT	5.0
Isopentane	NT	5.0
Acetonitrile	NT	5.0
Acetone	NT	50.0
2-Propanol	NT	5.0
n-Pentane	NT	5.0
n-Hexane	NT	5.0
Chloroform	NT	5.0
Tetrahydrofuran	NT	5.0
Benzene	NT	5.0
Carbon Tetrachloride	NT	5.0
n-Heptane	NT	5.0
Toluene	NT	5.0
Xylenes	NT	10.0



mL/Bottle	NA
mg THC/Bottle	NA
mg CBD/Bottle	NA
(mg) total cannabinoids/bottle	NA

Metals	PPM	RL
Compound		
Lead	NT	0.018
Arsenic	NT	0.007
Cadmium	NT	0.004
Mercury	NT	0.020

Microbial	CFU/g
Compound	
Enterobacteriaceae	NT
Coliform	NT
Ecoli	NT
Aerobic	NT
Yeast	NT
Mold	NT



Terpene (GC-MS)	mg/mL	mg/Bottle
Compound		
alpha-Pinene	NT	NT
Camphene	NT	NT
Sabinene	NT	NT
beta-Myrcene	NT	NT
Beta-Pinene	NT	NT
p-mentha-1-5-diene	NT	NT
(1S)-(+)-3-Carene	NT	NT
Alpha-Terpinene	NT	NT
Ocimene Isomer 1	NT	NT
(R)-(+)-Limonene	NT	NT
Ocimene Isomer2	NT	NT
Eucalyptol (1,8-Cineole)	NT	NT
gamma-Terpinene	NT	NT
Sabinene Hydrate	NT	NT
Terpinolene	NT	NT
Linalool	NT	NT
(+)-Fenchone and L(-)-Fenchone	NT	NT
1R)-Endo-(+)-Fenchyl	NT	NT
(-)-Isopulegol	NT	NT
Camphor	NT	NT
Isoborneol	NT	NT
Hexahydrothymol	NT	NT
(+)-Borneol and (-) Borneol	NT	NT
alpha-Terpineol	NT	NT
gamma-Terpineol	NT	NT
Nerol	NT	NT
Geraniol	NT	NT
(+) -Pulegone	NT	NT
Geranyl Acetate	NT	NT
alpha-Cedrene	NT	NT
trans- Caryophyllene	NT	NT
alpha-Humulene	NT	NT
Valencene	NT	NT
cis-Nerolidol	NT	NT
trans-Nerolidol	NT	NT
Guaiol	NT	NT
(-) Caryophyllene Oxide	NT	NT
(+) -Cedrol	NT	NT
(-) -alpha-Bisabolol	NT	NT
Total Terpenes	NT	NT

